

MARINER SANDS PLAT NO. 10

BEING A TRACT OF LAND LYING IN SECTIONS 31 AND 32, TOWNSHIP 38 SOUTH, RANGE 42 EAST, MARTIN COUNTY, FLORIDA. BEING A PART OF THE MARINER SANDS P.U.D.

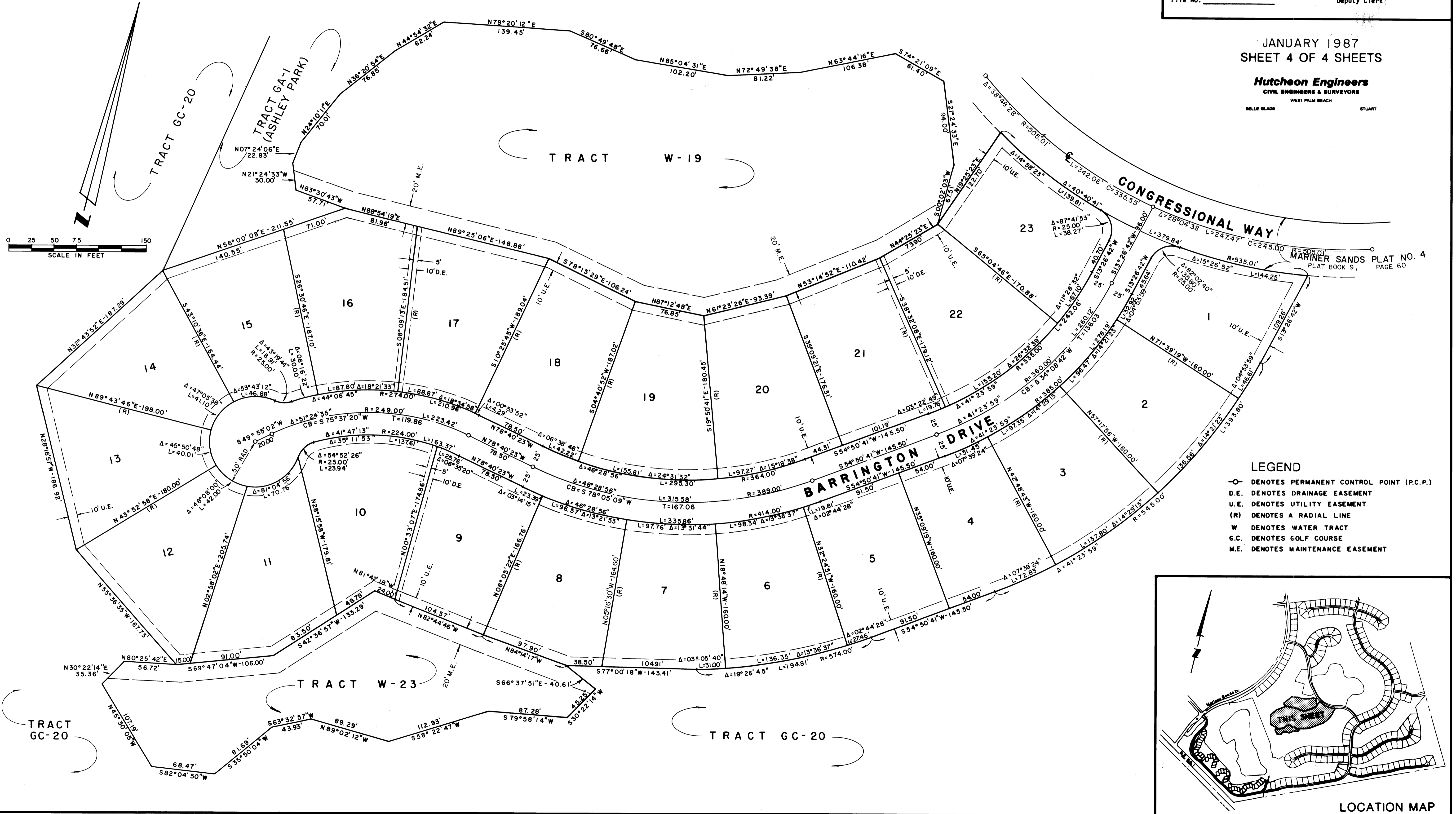
I, Marsha Stiller, Clerk of the Circuit Court of Martin County, Florida, hereby certify that this plat was filed for record in Plat Book 10, Page 71, Martin County, Florida, public records, this day of 1987.

MARSHA STILLER, CLERK
CIRCUIT COURT
MARTIN COUNTY, FLORIDA

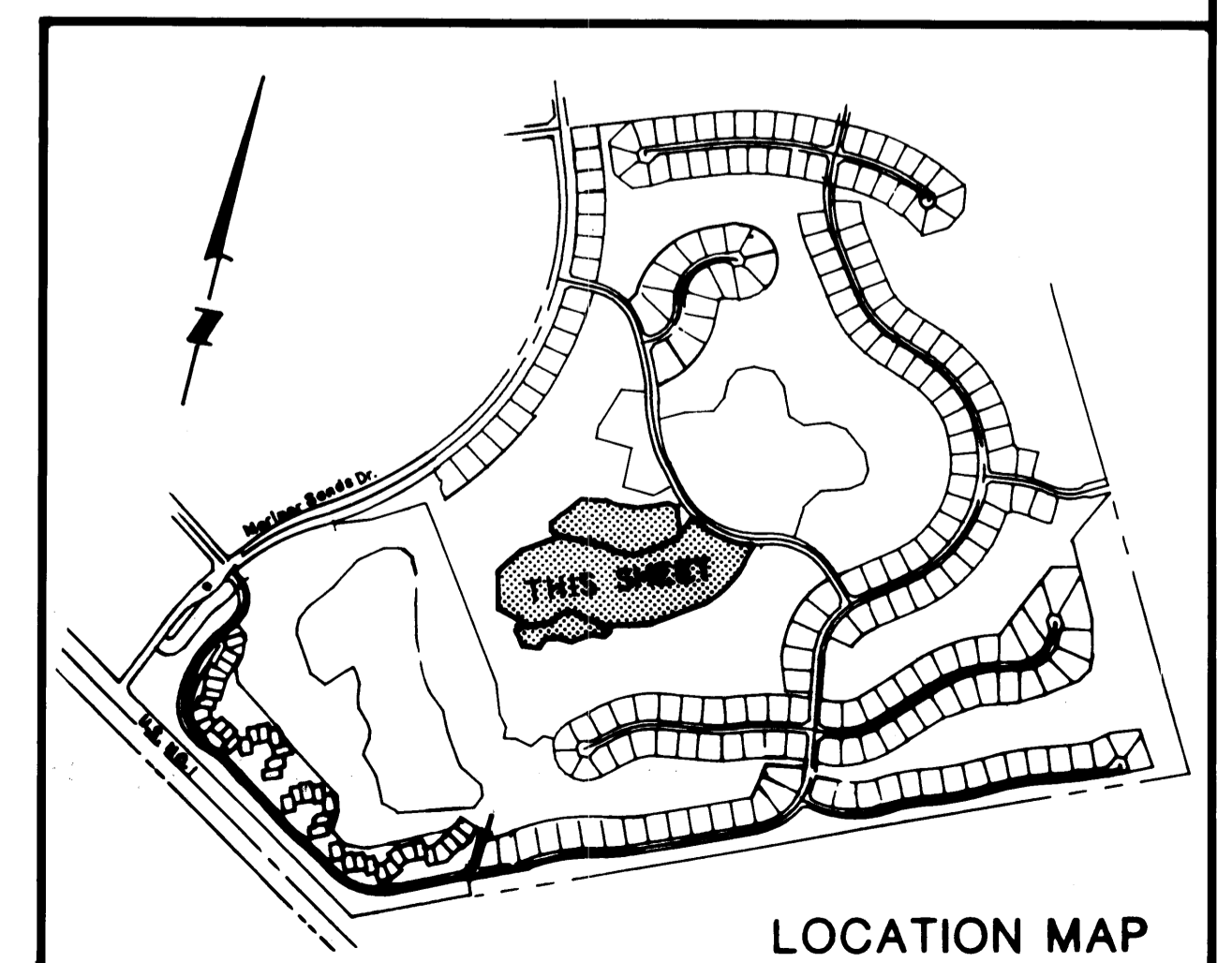
BY: Deputy Clerk

JANUARY 1987
SHEET 4 OF 4 SHEETS

Hutcheon Engineers
CIVIL ENGINEERS & SURVEYORS
WEST PALM BEACH
BELLE GLADE STUART



- LEGEND**
- DENOTES PERMANENT CONTROL POINT (P.C.P.)
 - D.E. DENOTES DRAINAGE EASEMENT
 - U.E. DENOTES UTILITY EASEMENT
 - (R) DENOTES A RADIAL LINE
 - W DENOTES WATER TRACT
 - G.C. DENOTES GOLF COURSE
 - M.E. DENOTES MAINTENANCE EASEMENT



LOCATION MAP